

PEM L 104

POND WATER LEVEL CONTROLS

CONTROLS, DUAL LEVEL - TRIPLE SENSORS, SOLENOID VALVES, FILL SPOUTS & PARTS

INDEX

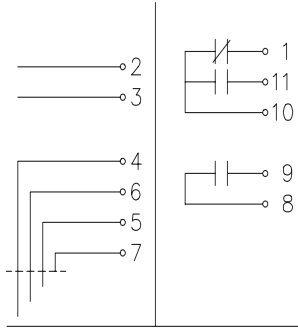
#	PEM	DESCRIPTION	SECTION
		INDEX	L104-1
461-0010	L104-1	Control Module	L104-2
462-0010	L104-100	115V.,60C. UL Control Panel	L104-2
462-0020	L104-100	240V.,50/60Hz Control Panel	L104-2
463-0400	L104-42	Conduit Mounted Sensors	L104-3
463-0520	L104-56	Free Standing Sensor, 305/406mm-12"-16" Water Depth	L104-3
463-0600	L104-57	Free Standing Sensors, custom Water Depth	L104-3
463-0700	L104-46	In Bronze Niche Sensors, Multiple Mounting Options	L104-4
463-0800	L104-48	In Bronze Niche Sensors, 3" Overflow, Multiple Mounting Options	L104-4
463-0820	L104-48-6	For Concrete Pond, In Plastic Niche Sensors, & 4" Overflow	L104-5
463-0821	L104-48-7	For Concrete Pond, In St.St. Niche, Sensors & 4" Overflow	L104-5
463-0824	L104-48-6-62	For Surface Liner Pond, In Plastic Niche, Sensors & 4" Overflow	L104-5
463-0825	L104-48-7-62	For Surface Liner Pond, In St.St. Niche, Sensors & 4" Overflow	L105-5
463-0900	L104-49	Top Access Remote Sensors	L104-6
462-0100	EV -Valves	24VAC Solenoid Fill Valves	L104-7
466 000	R1240/60	Free Standing Fill Spouts	L104-8
466 000	R1240/60	Free Standing Fill Spouts (Liner Ponds)	L104-8
480-700	R1340	Free Standing Goose Neck Fill Spouts	L104-8
		Parts for above	L104-9

PEM L104 POND DUAL WATERLEVEL CONTROLS

PEM L104-1 CONTROL MODULE

461-0010 U.L. Recognized Component - E 110256

TERMINALS & FUNCTIONS



1. Output, N.C. from Safety Shut Off Circuit
- 2,3. Power Supply
4. Common for Float Switch Sensors, 12 VDC
6. Return from Lowest Float Switch
5. Return from Intermediate Float Switch
7. Return from Highest Float Switch
8. Common for Water Make Up Circuit
9. Output, N.O. from Water Make UP Circuit
10. Common for Safety Shut Off Circuit
11. Output, N.O. from Safety Shut Off Circuit

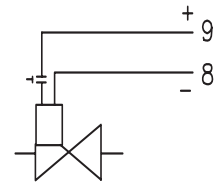
ELECTRICAL RATINGS:

Power Supply: **250V/115V, 50/60Hz, 1A**
 Output for Float Switch Sensors: 12 VDC
 Switch Ratings for controlled circuits:
240 VAC / 120 VAC / 24 VAC - 0.5A.

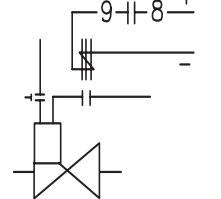
PEM L104 - 1 CONTROL MODULE is designed for inclusion into approved for the purpose control panels. When connected to a suitable PEM L104 Series Sensor Assembly, this dual stage water level control will operate a solenoid fill valve to maintain a constant operational waterlevel in a fountain pond and in addition has a low level safety shut off for the electrical equipment in a fountain pond should the waterlevel drop below normal operating depth.

PEM L104 - 1 Control Module is within a corrosion resistant polypropylene housing and has an 11 pin plug and socket. Indicating lights provide immediate status display. Green light is for Power 'ON', Yellow light indicates water make up circuit is engaged. Red light indicates that the low level safety shut off circuit is engaged and will not disengage until normal operating waterlevel is re-established. This control has a safety transformer for the sensor float switches, providing 12 VDC. Time delayed 'ON' action of the water make up as of the safety shut off prevents rapid cycling due to wave action in a fountain pond. Wiring to sensor assembly requires 4 unshielded # 18 AWG size conductors.

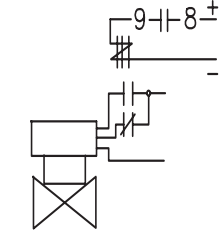
L104 - 100 ONLY, Direct Solenoid Valve Connection for 24 VAC Solenoid Valve Water Make Up



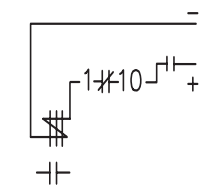
L104-1 ONLY, Indirect Solenoid Valve Connection for Water Make Up



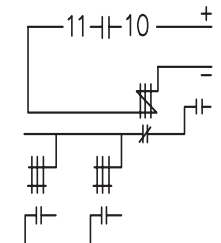
L 104-1 ONLY, Indirect Motorized Valve Connection for Water



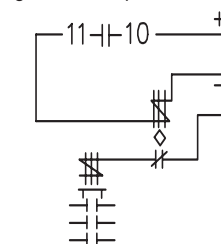
L104 - 1 & L 104 - 100, Low Water Safety Shut Off for Illumination Contactor or Pump Starter



L 104 - 1 & L 104 - 100, Low Water Safety Shut Off for Illumination Contactor & Small Size Pump Motor Starter



L 104 - 1 & L 104 - 100 Low Water Safety Shut Off with Time Delay Relay for Larger Size Pump Starters

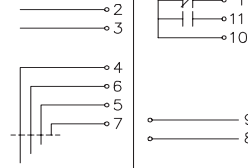


PEM L104-100 CONTROL PANEL WITH TRANSFORMER

L104-100A, 115V #462-0010

L104-100B, 240V #462-0020

TERMINALS & FUNCTIONS



1. Output, N.C. from Safety Shut Off Circuit
- 2,3. Power Supply
4. Common for Float Switches Sensors, 12 VDC
6. Return from Lowest Float Switch Sensor
5. Return from Intermediate Float Switch Sensor
7. Return from Highest Float Switch Sensor
8. (-)24 VAC Output for Water Make Up Circuit
9. (+)24 VAC Output for Water Make UP Circuit
10. Common for Safety Shut Off Circuit
11. Output, N.O. from Safety Shut Off Circuit

ELECTRICAL RATINGS:

Power Supply:
L104-100A, 115V - 60Hz, 3 Amp.
L104-100B, 240V - 50Hz, 2 Amp.
 Output for Float Switch Sensors: 12 VDC
 Switch Ratings for Safety Shut Off Circuit:
240 VAC / 120 VAC / 24 VAC - 0.5A.
 Output for Solenoid Valve:
24 VAC, 50/60 Hz, 1 Amp.



250mm
9.84"

150mm
5.910"

175mm
6.89"

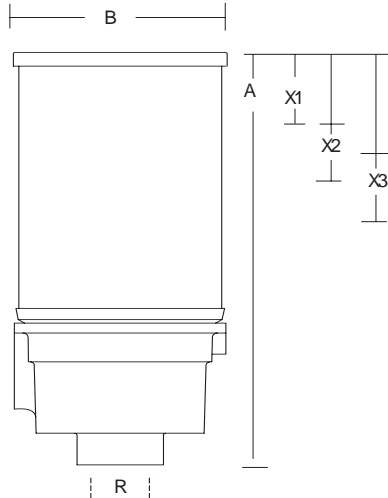
PEM L104 - 100 CONTROL when connected to a suitable PEM L104 Series Sensor will provide a dual stage waterlevel control system. This control will operate a solenoid fill valve to maintain a constant operational waterlevel in a fountain pond and in addition it has a low level safety shut off for the electrical equipment in a fountain pond, should the waterlevel drop below normal operating depth. PEM L104 - 100 has a 24V-50VA safety power supply included for the direct operation of a 24V solenoid fill valve in the water make up circuit. Indicating lights provide immediate status display. Green light is for Power 'ON', Yellow light indicates water make up circuit is engaged. Red light indicates that the low level safety shut off circuit is engaged and will not disengage until normal operating waterlevel is re-established. This control has a safety transformer for the sensor float switches, providing 12 VDC. Time delayed 'ON' action of the water make up as of the safety shut off prevents rapid cycling due to wave action in a fountain pond. The wall mounted control panel is within a NEMA Type 4 corrosion resistant polycarbonate enclosure. Wiring to sensor assembly requires 4 unshielded #18 AWG size conductors. **The installation must conform to all applicable electrical codes.**

PEM WATER LEVEL SENSORS FOR PEM L104 CONTROLS

PEM L104-42 CONDUIT MOUNTED SENSOR

#463-0400

PEML104-42 is made of cast bronze, brass and copper and stainless steel fitted. Junction box has Neoprene 'O' ring seals. Bottom conduit connection for mounting upon 3/4" metallic, non corrodible metal. Float Switches are plastic and are reed switch activated by perma-magnets embedded in the switch float.



ADJUSTMENT RANGES:

- X1 Top of enclosure to maximum waterlevel
38.1mm - 1.500"
- X2 Adjustment range for normal waterlevel
from top of enclosure:
38.1mm - 1.500" to 65mm - 2.560"
- X3 Adjustment range of low level shut off
from top of enclosure:
55mm 2.170" to 80mm - 3.150"

After removal of cover, each float switch is adjustable within the above range by unlocking the collar by loosening the set screw and sliding the switch stem up or down from base, then locking the collar again.

DIMENSIONS:

- A Height 220mm / 8.661"
- B Diameter 94mm / 3.700"
- R Conduit Size 3/4" NPT/BSP

ELECTRICAL RATING:

12 Volts DC, 10 Volt Ampere (VA) Max.

PEM L104-56

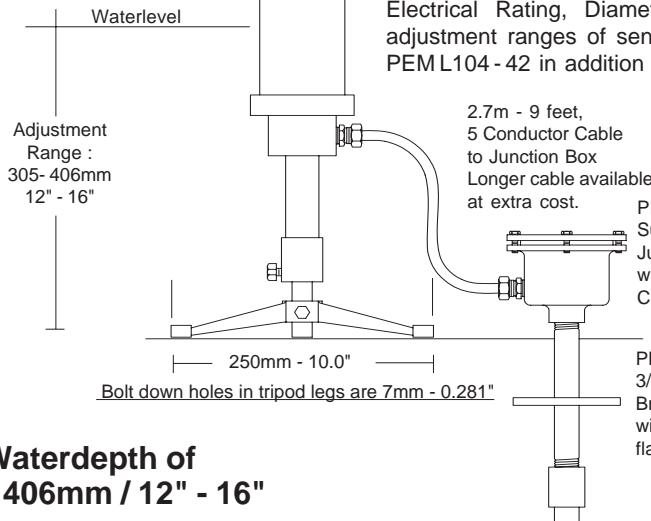
#463-0520

FREE STANDING SENSOR

PEM L104-56 is made of bronze, brass and copper, stainless steel fitted.

Electrical cable is Type St 18/5 AWG.

Electrical Rating, Diameter of Sensor and Waterlevel adjustment ranges of sensor float switches are same as PEM L104 - 42 in addition to height adjustment of stand.



For Waterdepth of
305 - 406mm / 12" - 16"

2.7m - 9 feet,
5 Conductor Cable
to Junction Box
Longer cable available
at extra cost.

Junction Box with cordseal and into-pool Conduit are not part of Sensor, They are optional and extra!

PEM J1 /1
Submersible
Junction Box
with 1 x J14
Cordseal

PEM J61
3/4" Into Pool
Brass Conduit
with no leak
flange

Also available as **PEM L104-56A** (#463-0510) for 150-175mm/6"-7" Waterdepth mounted on 150mm/ 6" Diameter plate (stand not height adjustable).

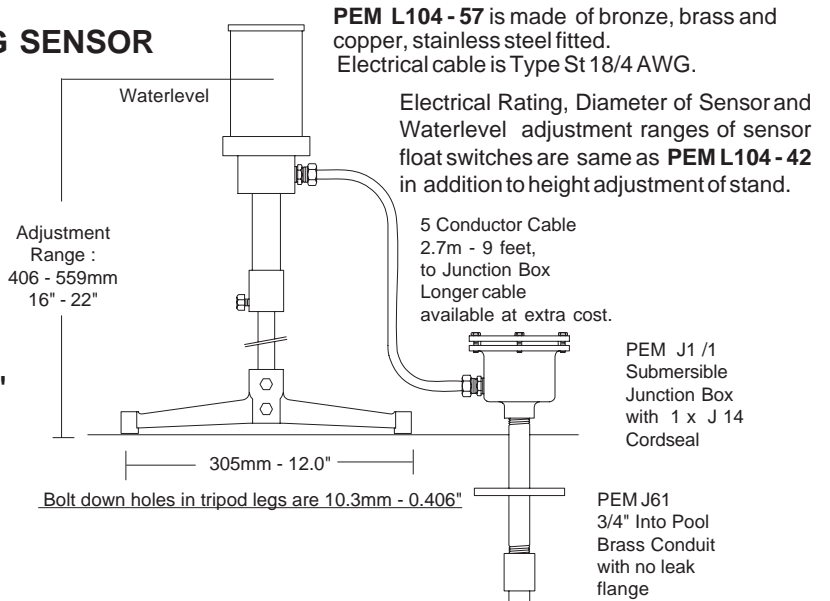
Custom made at extra cost for any water depth between the above and the **PEM L104-56**.

PEM L104-57 FREE STANDING SENSOR

#463-0600

* For water depths other than standard, custom made sensors are available at extra cost. Suggested maximum water depth is 2.43m - 8 feet.

**STANDARD*
Waterdepth:
406 - 559mm / 16" - 22"**



PEM L104 - 57 is made of bronze, brass and copper, stainless steel fitted.
Electrical cable is Type St 18/4 AWG.

Electrical Rating, Diameter of Sensor and Waterlevel adjustment ranges of sensor float switches are same as **PEM L104 - 42** in addition to height adjustment of stand.

5 Conductor Cable
2.7m - 9 feet,
to Junction Box
Longer cable
available at extra cost.

PEM J1 /1
Submersible
Junction Box
with 1 x J 14
Cordseal

PEM J61
3/4" Into Pool
Brass Conduit
with no leak
flange

Connecting Junction Box with cord seal and into pool Conduit are not part of Sensor, are optional and extra!

NOTE: Installation must conform to all applicable electrical codes.

PEM L104 - 3

Controls 2006-10 replacing 2005-2

PEM WATER LEVEL SENSORS FOR PEM L104 CONTROLS

The **PEM L104-46** is made of cast bronze, brass with a stainless steel cover and fasteners. The Float Switches are plastic.

PEM L104 - 46 Multiple Float Switch Level Sensor is mounted flush into the front of a wall, access is behind a solid stainless steel cover. The sensor monitors the normal waterlevel, the water make up and the safety low level shut off when connected to **PEM L 104 - 1** or **L 104 - 100 Waterlevel Controls**.

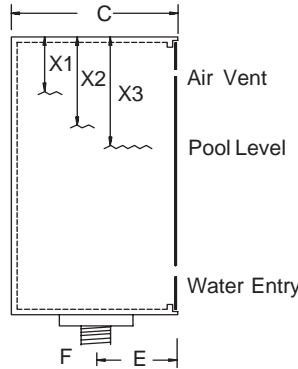
ADJUSTMENT RANGES:

- X1 Top of enclosure to maximum waterlevel
38.1mm - 1.500"
- X2 Adjustment range for normal waterlevel
from top of enclosure:
38.1mm - 1.500" to 65mm - 2.560"
- X3 Adjustment range of low level shut off
from top of enclosure:
55mm 2.170" to 80mm - 3.150"

Each float switch is adjustable by unlocking collar and sliding the switch stem up or down from base, then locking the collar again.

DIMENSIONS:

A	Height	205mm 8.070"
B	Width	103mm 4.055"
C	Depth	112mm 4.400"
D	Conduit Socket	17mm 0.670"
E	Center of cond. to face	57mm 2.244"
F	Conduit Size	1/2" NPT /BSP



OPTIONAL & EXTRA
 Tilemask: **Add/-58**
WATERPROOFING OPTIONS
 Surface Puddle Flange
Add/-60
 Surface Membrane Clamp
Add/-62

PEM L104-46

SENSOR

In Wall Mounted

#463-0700



ELECTRICAL RATING: 12 Volts DC, 10 Volt Ampere (VA)

Combination Overflow, Level Sensor & Fill Inlet

The **PEM L104-48** is made of cast bronze, brass and copper. It is stainless steel fitted and with a Neoprene 'O' ring seal. The **PEM L104 - 48** wall mounted **Multiple Float Switch Level Sensor** combines 4 separate control devices in a compact unit with all components hidden from sight:

1. Adjustable Overflow, height adjustable, with 220 mm/8.66" overflow lip.
2. Automatic Water Make Up Float Switches, height adjustable 3.81mm/1.500"
3. Low Water Level Safety Shut Off Float Switches, height adjustable 38.1mm/1.500"
4. 3/4" Inlet for solenoid controlled water supply (Max. 15 PSI, 1 Kpa, 1 bar.)

PEM L104- 48 Sensors are to be connected to **PE L104-1** or **L104 - 100** Waterlevel Controls. Sensors operate with safe 12 volts, low voltage. **PEM L104-48 Sensors** are available with waterproofing Surface Flanges (**601**), or **Tile Mask(-58)** or **Surface Membrane Clamp (60-2)**.

PEM L104-48 are supplied as standard in natural bronze, chrome plating of face plate and Tile Mask is available at extra cost (Specify with order!).

Installation must conform to all applicable electrical & plumbing codes.

DESCRIPTION:

- A 3"NPS/BSP Overflow Pipe Connection
- B 1/2" NPT/BSP Conduit Connection for Waterlevel Sensors
- C 1/2" NPT/BSP Alternate Conduit Connection (Specify !)
- D 3/4" NPT/BSP Solenoid Valve controlled Fill Connection (Max. 15 PSI/1KPA/1 Bar, use pressure reducer in supply!)
- Y Range of Water Make Up Sensor (Appr. 40mm-1.500")
- X Range of Low Level Shut Off Sensor (Appr. 40mm-1.500")

DIMENSIONS:

1	Cover , width	270mm	10.630"
2	Cover , height	170mm	6.693"
3	Extension of cover	18mm	0.710"
4	Width of niche	265mm	10.433"
5	Height of niche	165mm	6.500"
6	Depth of niche	121mm	4.764"
7	3"pipe entry from top	180mm	7.087"
8	1/2"conduit entry from top	230mm	9.055"
9	Cntr of pipe & conduit from niche face	61mm	2.403"
10	Cntr of 3" pipe from left side of niche	72mm	2.835"
11	Cntr. of 1/2" cond. right side of niche	75mm	2.953"
12	Cntr. of 3/4" pipe top of niche face	42mm	1.654"
13	Cntr. of 3/4" pipe from back of niche	25mm	0.985"
14	Cntr. of alternate 1/2" conduit from base entry	46mm	1.811"
15	Cntr. of altern. cond.from niche face bottom	12mm	0.472"
16	Opening between wall & face plate	10mm	0.394"
17	Max.waterlevel from top of niche	24mm	0.945"
18	Adjustment range of overflow	100mm	3.937"
19	Max. Make Up level from top of niche	50mm	1.969"
20	Adjustment range of make up sensor	35mm	1.378"
21	Diameter of overflow	70.2mm	2.785"



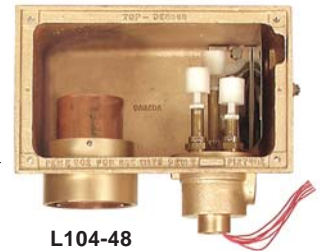
L104-48

PEM L104-48

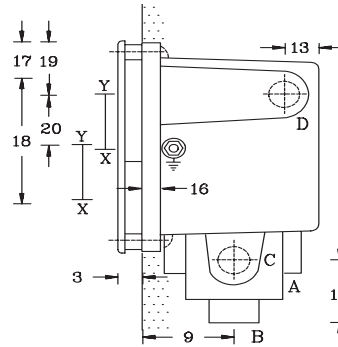
SENSOR

In Wall Mounted

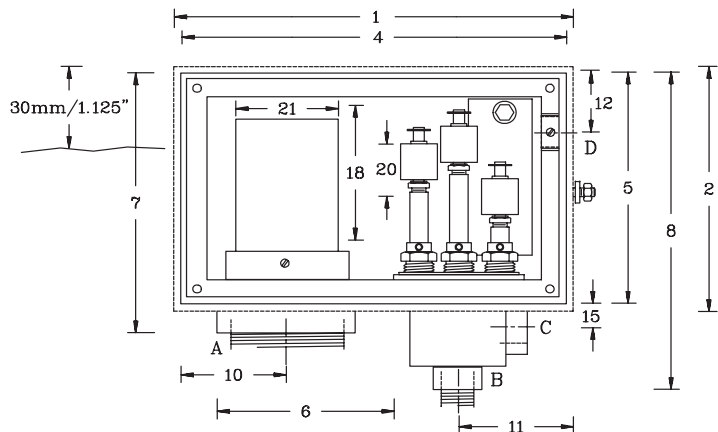
#463-0800



L104-48
without cover



OPTIONAL & EXTRA
 Tilemask : **Add/-58**
WATERPROOFING OPTIONS
 Surface Puddle Flange
Add/-60
 Surface Membrane Clamp
Add/-62



PEM L104 - 4

Controls 2006-10 replacing 2005-2

PEM WATER LEVEL SENSORS FOR PEM L104 CONTROLS

PEM L104-48-6

Wall Mounted Dual Waterlevel Sensor & 100mm/ 4" Overflow

For: Concrete Ponds

With Plastic Niche:

463-0820 PEM L104-48-6

With Stainless Steel Niche:

463-0821 PEM L104-48-7

CONSTRUCTION:

The assembly has Cast Bronze Frame, Grating, Internal Fittings & Surface Liner Clamp fitted with stainless steel overflow tube and fasteners. The concrete forming niche can be supplied in plastic or in stainless steel See above specification.

Either forming niche serves solely to form the concrete niche for the internal equipment and is watertight.

The overflow tube has a 40mm vertical adjustment after installation.

The dual waterlevel sensor permits adjustment of water make up levels also safety shut off in case of low waterlevel. For description of the dual waterlevel control & sensor see :

PEM L104-100 and PEM L104 - 42 , catalog pages 405 & 406

The overflow is suggested for a water surface of 25 m² \ 270 Sqft.

The Overflow Weir length is 0.32m \ 1.05 Ft.

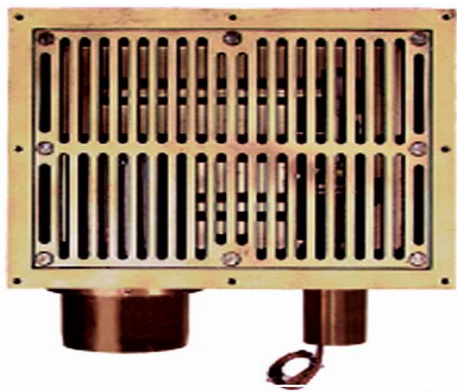
For: Surface Liner Ponds

With Plastic Niche:

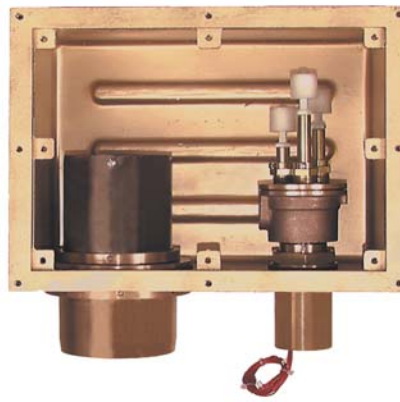
463-0824 PEM L104-48-6 +/-62

With Stainless Steel Niche:

463-0825 PEM L104-48-7 +/-62



Front View
(Closed)

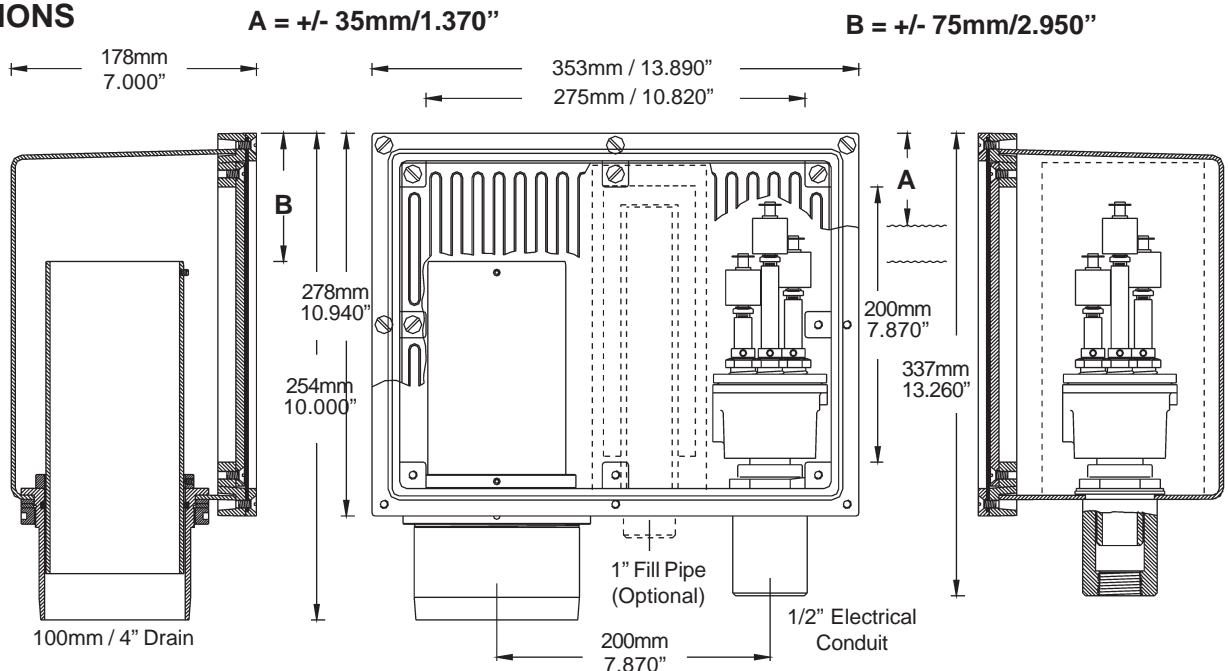


Front View
(Open)



Side View

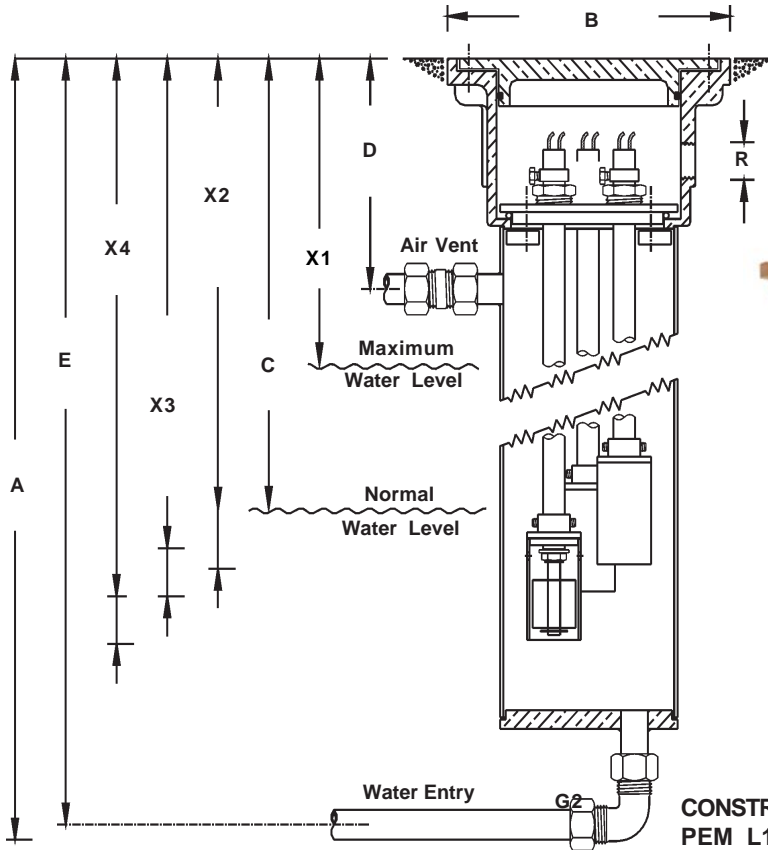
DIMENSIONS



PEM L104 - 5

Controls 2006-10 replacing 2005-2

PEM WATER LEVEL SENSORS FOR PEM L104 CONTROLS



PEM L104 - 49 TOP ACCESS SENSORS #463-0900



L104-49
Float
Switches



L104-49
Sealed w/Cover

CONSTRUCTION:

PEM L104-49 is made of cast bronze, brass and copper and stainless steel fitted. Junction box and float-switch tubes have Neoprene 'O' ring seals. Float Switches are plastic with the reed switch activated by perma magnets embedded in switch float. Float switches are encased in protective enclosure. Most Sensors assemblies are custom made to given dimensional specifications. Also recommended for remote sensor installation with connecting tube into pool. Plaza overflow fountains can be controlled with remote sensor in planter box near fountain at same or higher elevation (connecting tubing must not develop air locks). Custom made sensors with an additional 4th (X4) Floatswitch are available where an extra alarm circuit is required, either for very low water level or very high water level. All float switches are accessible after installation for adjustment.

FOR CUSTOM MADE SENSORS SPECIFY:

ADJUSTMENT RANGES -X1, X2, X3, (X4)

DIMENSIONS: C, D, E, F2, G2,

(Y, if required, placement at job site by soldering)

(Note: 'X' Dimensions cannot be less than shown for 'D')

ADJUSTMENT RANGES OF STANDARD SENSORS:

- X1 Top of enclosure to maximum waterlevel
152mm - 6.000"
- X2 Adjustment range for normal waterlevel
from top of enclosure:
152-178mm - 6.000"-7.000"
- X3 Adjustment range of low level shut off
from top of enclosure:
190-216mm - 7.500"-8.500"
- X4 Possible extra float switch above normal waterlevel for high waterlevel alarm.

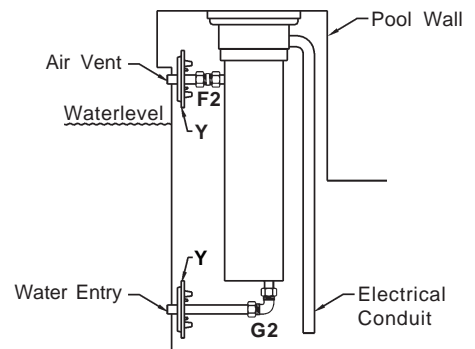
(Optional and extra, requires additional 2 conductors and Waterlevel control panel relay).

After removal of cover, each floatswitch is adjustable within the above range by unlocking the collar by loosening the set screw and sliding the switch stem up or down in base, then locking the collar again. If sensor tubes become too high for enclosure, they can be removed from housing, the float switch assembly removed, cut the brass tube with a tube cutter and ream out. Care is to be taken, to use new thread sealant when re-installing the float switch assembly.

PARTS & DIMENSIONS OF STANDARD SENSOR:

A	Overall Height	305mm - 12.000"
B	Diameter of top with grout ring	170mm - 6.700"
C	Distance from top to max. normal waterlevel	152mm - 6.000"
D	Distance top to center of air vent tube	140mm - 5.500"
E	Distance top to center of water inlet	292mm - 11.500"
F1	Tube size of air vent compression coupling (O.D.)	16mm - 0.625"
F2	Length of 16mm O.D. copper tube supplied with sensor	305mm - 12.000"
G1	Tube size of water inlet, compression elbow (O.D)	16mm - 0.625"
G2	Length of 16mm O.D. copper tube supplied with sensor	305mm - 12.000"
R	Conduit Size (Requires formed or long 90 degrees elbow)	1/2"NPT/BSP
Y	Optional & Extra, PEM 6390 waterproofing membrane flanges and clamps, for sealing of surface or subsurface membrane penetrations, supplied for job site installation.	

TYPICAL INSTALLATION



Installation must conform to all applicable electrical codes.

ELECTRICAL RATING:

12 Volts DC , 10 Volt Ampere (VA) Max.

PEM L104 - 6

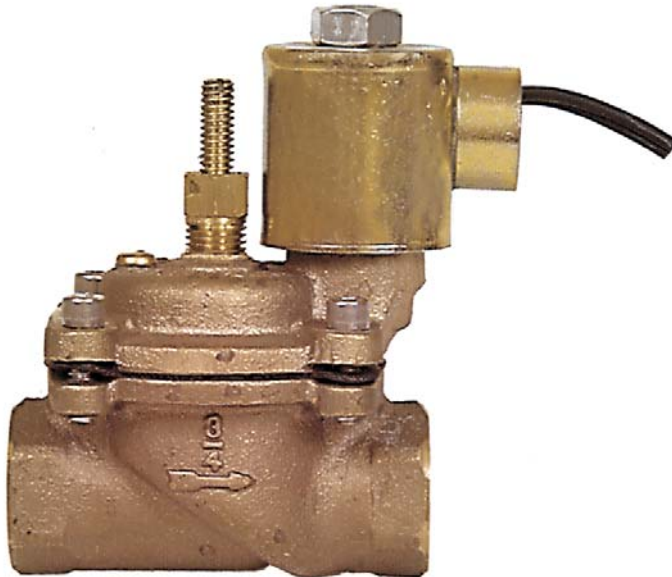
Controls 2006-10 replacing 2005-2

24 VAC SOLENOID FILL VALVES FOR PEM L104 CONTROLS

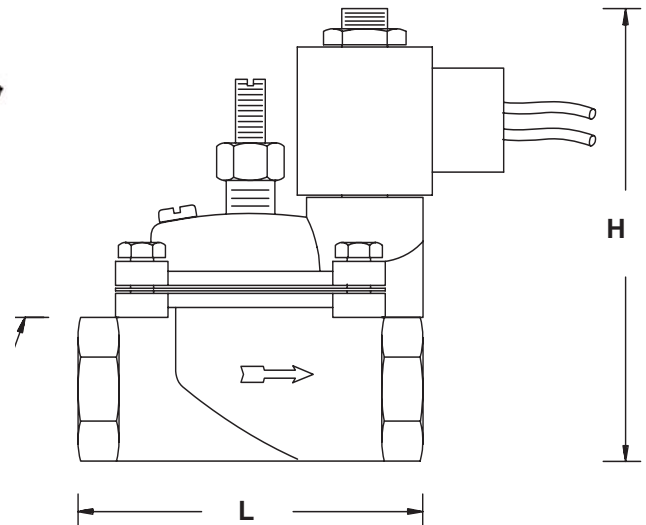
PEM EV-100 SELECT BRONZE SOLENOID FILL VALVES

#462-0100

PEM Select EV100 - Bronze Solenoid Valves are suggested for use with PEM L101 and L104 Waterlevel Control Systems to serve as fill valves. PEM Select EV100 - Bronze Solenoid



EV-102



Valves are designed for use with clean water. Operating voltage is 24VAC 50/60Hz, 12W. Valves are diaphragm type with solenoid operated pilot valve, stainless steel fitted. Solenoid coil is epoxy encapsulated. Valves are equipped with slow closing orifice, manual by pass opening (with screw driver), adjustable micrometric flow control to regulate flow through valve and threaded 1/2" NPS/BSP electrical conduit connection. Pipe thread connections are either NPT or BSP as specified. Maximum pressure rating of valves: 75 PSI - 55 bar. The suggested flow rate for these valves is between the pressure loss of approximately (A) 2 PSI-0.15 bar and the suggested maximum pressure loss of (B) 10 PSI - 0.7 bar. For best performances select valve for flow rate from values given below. For fountains, the pool overflow shall always match in absorption rate the inflow rate of the water supply.

#	PEM select	PIPE size	Flow Range		L m m	L inch.	H m m	H inch.	W m m	W inch.
			(A) L/min	(B) GPM						
462-0120	EV102	3/4"	38 / 95	10 / 25	92.0	3.625"	113.6	4.470"	71.5	2.813"
462-0130	EV103	1"	57 / 151	15 / 40	98.4	3.875"	115.1	4.531"	71.5	2.813"
462-0140	EV104	1 1/4"	84 / 265	22 / 70	124.0	4.875"	139.7	5.500"	90.1	3.578"
462-0150	EV105	1 1/2"	151 / 340	40 / 90	124.0	4.875"	143.7	5.656"	90.1	3.578"
462-0160	EV106	2"	246 / 568	65/150	147.7	5.813"	149.2	5.875"	119.1	4.688"

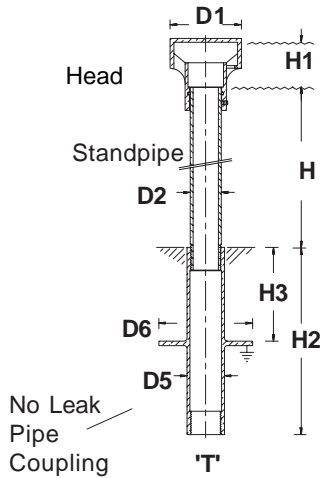
NOTE: These Valves might require suitable Backflow Preventers.

FREE STANDING FILL SPOUTS FOR PEM L104 CONTROLS (FOR IN WALL MOUNTED FILL SPOUTS SEE PEM 6300 FITTINGS)

PEM R1240/60

466-000

Fill Spouts for Concrete Pools



The Fill Spouts are designed to fill pools without undue splashing, noise or disturbance from well above highest possible water level.

The Fill Spouts consist of 3 basic parts:

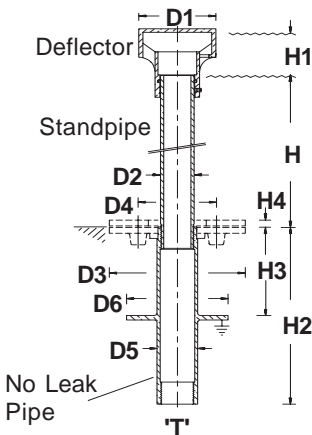
1. Cast bronze **PEM 6374 series No Leak Pipe Coupling** with pipe threads. Flange & Liner Clamp mounted to top of coupling to seal surface pool liner.
2. Brass standpipe with pipe threads.
3. Cast bronze deflector head, with 'O' ring seal and stainless steel lock screw to fasten to stand pipe. Threaded pipe connections must have the threads securely sealed with Teflon Tape or Thread Sealer.

DIMENSIONS:		T	H	H1	H2	H3	D1	D2	D5	D6
#	PEM		mm	mm	mm	mm	mm	mm	mm	mm
466-011	R1241	1"	500	48	200	100	76	33.4	40	100
466-014	R1244	1"	1000	48	200	100	76	33.4	40	100
466-021	R1261	1 1/2"	500	50	200	100	90	49.0	55	100
466-024	R1264	1 1/2"	1000	50	200	100	90	49.0	55	100

PEM R1240/60

466-000

Fill Spouts for Liner Pools



The Fill Spouts are designed to fill pools without undue splashing, noise or disturbance from well above highest possible water level.

The Fill Spouts consist of 3 basic parts:

1. Cast bronze **PEM 6374 series No Leak Pipe Coupling** with pipe threads. Flange & Liner Clamp mounted to top of coupling to seal surface pool liner.
2. Brass standpipe with pipe threads.
3. Cast bronze deflector head, with 'O' ring seal and stainless steel lock screw to fasten to stand pipe. Threaded pipe connections must have the threads securely sealed with Teflon Tape or Thread Sealer.

DIMENSIONS:		T	H	H1	H2	H3	H4	D1	D2	D3	D4	D5	D6
#	PEM		mm	mm	mm	mm	mm	mm	mm	mm	mm	mm	mm
466-013	R1243	1"	500	48	200	100	6	76	33.4	134	76	40	100
466-016	R1246	1"	1000	48	200	100	6	76	33.4	134	76	40	100
466-023	R1263	1 1/2"	500	50	200	100	6	90	49.0	152	95	55	100
466-026	R1266	1 1/2"	1000	50	200	100	6	90	49.0	152	95	55	100

PEM R1340

480-7000

Chromed Goose Neck Spouts



#	PEM	NPT/BSP
480-7030	R1343	3/4"
480-7040	R1344	1"
480-7050	R1345	1 1/4"
480-7060	R1346	1 1/2"
480-7070	R1347	2"

Overall height of each goose neck is : 457mm \ 18.00"

PEM R1340

Gooseneck Fill Spouts are designed to comply with plumbing codes, that require the discharge of a water supply into a pool to terminate at a specified distance above the highest possible waterlevel in a pool.

PEM R1340 Fill Spouts are made of copper and are chrome plated.

Where the above plumbing code requirement does not apply, the valve can discharge directly into the pool.

PARTS FOR PEM L 104

CONTROLS, SENSORS, VALVES & FILL SPOUTS

#	PEM	DESCRIPTION
		INDEX
402-0000	L104-1	Requires new Unit
402-0100	L104-100/-01	Replacement Plug In Processor
402-0110	L104-100/-05	Transformer,120V
402-0120	L104-100/-06	Transformer, 240V
402-0140	L104-100/-11	Fuse , 24V/2.5A.
402-0300	L104/-30	Single Float Switch Assembly *
402-0320	L104/-32*	Safety Cut Off Brass Riser for Float Switch
402-0330	L104/-33*	Water Make Up Brass Riser for Float Switch
402-0340	L104/-34*	Operating Level Brass Riser for Float Switch
402-0360	L104/-36*	Locking collar for Brass Riser for Float Switch
	*	Not for L104-49
402-0410	L104/-41	Complete cover for L104-42, -56 or -57
402-0510	L104-46/-1	Stainless Steel Cover with bolts
402-0520	L104-46/-2	Set of bolts for cover
402-0540	L104-48/-1	Cover with bolts
402-0546	L104-48/-6-1	Cover with bolts
402-0547	L104-48/-6-1-2	Set of bolts for cover
402-0548	L104-48/-1-5	Set of 3 Float switches
402-0549	L104-48/-6-5	Set of 3 Float switches
402-0550	L104-49/-2	Set of bolts for cover
462-0123	EV102-3	3/4" Valve Diaphragm
462-0133	EV103-3	1" Valve Diaphragm
462-0143	EV104-4	1 1/4" Valve Diaphragm
462-0153	EV105-5	1 1/2" Valve Diaphragm
462-0163	EV103-6	1" Valve Diaphragm
466-0002	R1240-1	1" Bronze Fill Spout Cover
466-0111	R1241&43	1" x 500mm Stand Pipe, Brass
466-0114	R1244&46	1" x 1000mm Stand Pipe, Brass
466-0211	R1260-1	1 1/2" Bronze Fill Spout Cover
466-0224	R1261&63	1 1/2" x 1000mm Stand Pipe, Brass
466-0224	R1264&66	1 1/2" x 1000mm Stand Pipe, Brass