

BASE, BASE-OPTION & FITTING TO BE ORDERED TOGETHER AS REQUIRED BUT ACCOUNTED FOR SEPARATELY. The drawings on this page show a base, which is not included in fitting option.

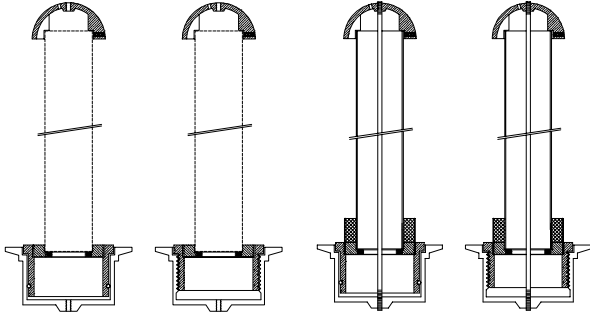
OVERFLOW STAND PIPES & DRAINS

PEM 62202

54mm / 2.125" O.D. OVERFLOW STANDPIPE

For suggested water surface of 10 m² / 105 sq ft.
 Overflow weir length = 0.16m \ 0.53 Ft

- | | | | |
|-----------------------------|--------------------------------|---------------------------|------------------------------|
| 62202-X
#610-4220 | 62202-05-X
#610-4230 | 62202
#610-4200 | 62202-05
#610-4210 |
|-----------------------------|--------------------------------|---------------------------|------------------------------|

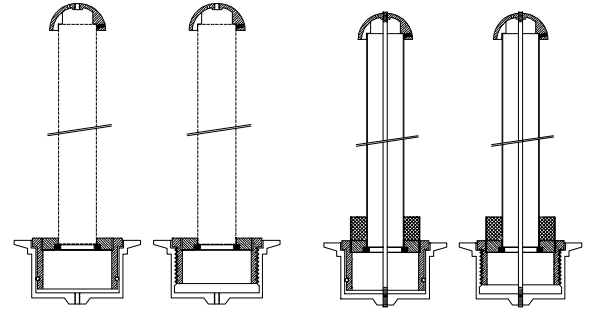


PEM 62201

41mm / 1.625" O.D. OVERFLOW STANDPIPE

For suggested water surface of 5 m² \ 50 sq ft.
 Overflow weir length = 0.10m \ 0.40 Ft

- | | | | |
|-----------------------------|--------------------------------|---------------------------|------------------------------|
| 62201-X
#610-4120 | 62201-05-X
#610-4130 | 62201
#610-4100 | 62201-05
#610-4110 |
|-----------------------------|--------------------------------|---------------------------|------------------------------|

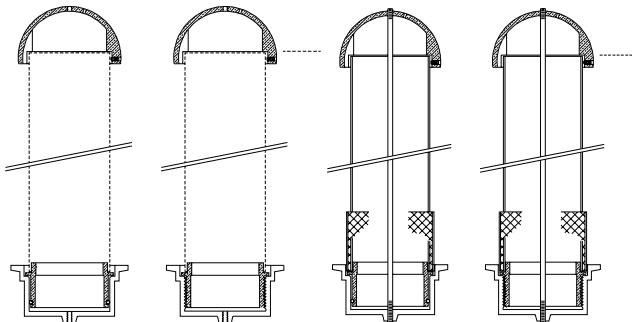


PEM 62204

105mm / 4.125" O.D. OVERFLOW STANDPIPE

For suggested water surface of 25 m² \ 270 sq ft.
 Overflow weir length = 0.32m \ 1.05 Ft

- | | | | |
|-----------------------------|--------------------------------|---------------------------|------------------------------|
| 62204 X
#610-4420 | 62204-05-X
#610-4430 | 62204
#610-4400 | 62204-05
#610-4410 |
|-----------------------------|--------------------------------|---------------------------|------------------------------|

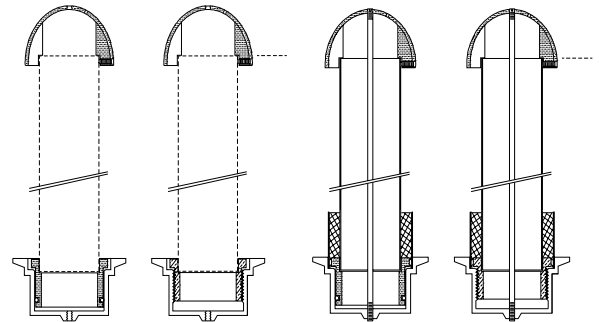


PEM 62203

79mm / 3.125" O.D. OVERFLOW STANDPIPE

For suggested water surface of 15 m² \ 160 sq.ft
 Overflow weir length = 0.24m \ 0.79 Ft

- | | | | |
|-----------------------------|--------------------------------|---------------------------|------------------------------|
| 62203-X
#610-4320 | 62203-05-X
#610-4330 | 62203
#610-4300 | 62203-05
#610-4310 |
|-----------------------------|--------------------------------|---------------------------|------------------------------|



PEM 6220 Series Overflow Stand Pipes & Drains are made of bronze, brass and/or copper and are stainless steel fitted. The domes are natural bronze, chrome plating of dome and/or stand pipe at extra cost. For metric stainless steel stand pipes see page 621

Stand pipes 62201 & -05, 62202 & -05, 62203 & -05 also 62204 & -05 are supplied as standard for 400mm \ 16" water depth and with debris screen to fit into base. This is to keep bottom debris out of drain, when the stand pipe is lifted. For other water depths, the stand pipes can be custom made to suit at extra cost. **X-type** stand pipes and drains consist of base adapter with solder fit for copper tube plus the dome or cover. The copper tube and assembly is by supplier or contractor to suit.

For water depth's greater than 0.6m \ 2 Feet, the 05 threaded option is required to be able to remove the stand pipe. Standard stand pipes & drains have slip in joints with 'O' ring seals. Stand pipes & drains with 05 Options have threaded connections with O ring seal.

For absorption capacity use waterfall data x overflow weir length (as shown for each size) x maximum freeboard before overflowing. Where required use multiple overflows. The general purpose of the overflow stand pipe is to prevent the overflowing of the pool and when lifted to drain a pool. Base, pipe connection size can be tabulated from overflow rate x head pressure of water depth of pool. The absorption rates shown are average and might vary due to climatic conditions at the site. The overflow must be large enough to drain off the water in an emergency, should the make up water supply fail to close.

All stand pipes but the 'X' type, are made vandal resistant by bolting down the domes with center rods to the base. In addition the domes are secured with anti-theft lockscrews to prevent the unscrewing of the domes or covers.

TO SPECIFY & ORDER :

**Base + Base Option + Choice of Stand Pipe
 (A threaded stand pipe requires a threaded Base (-05))**