

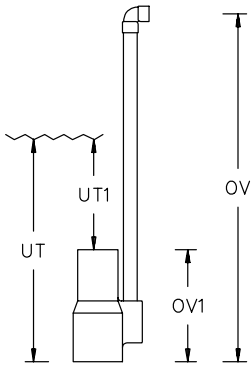
PEM 60 SERIES FOAM GEYSER JETS



#505-6000



DIMENSIONS :



PEM 60 Series Jets are designed to provide in their lowest sprayheights white mounds of water, while at greater sprayheights to provide highly visible fluffy white spray effects. **PEM 60 Series** Jets are made of cast bronze with hard copper air snorkels. The dimensions 'UT' have to be maintained to repeat the performances set out below. By reducing the dimension 'UT' the spray effect will be higher and thinner. By increasing 'UT', the spray effect will be lower and heavier. **PEM 09 Series** Vertical Adjustments may be used to control the spray effects of all jets but 66A, which has a built in 'UT1' adjustment. **PEM 08 Series** vertical adjustment flanges are a must to provide perfect vertical alignment of single or multiple applications. The air intake snorkel has to protrude out of the water at all times, where this is not possible, the jets can be supplied custom made, with side outlet(s) for the breather pipe(s) or tube(s) which must slope up slightly and have no air traps. Suggested remote air intake fitting on the inside freeboard of a pool is PEM 6315A. For multiple installations a combined breather manifold of suitable size can be used. The use of PEM Water Make Up Controls is suggested to maintain the required constant waterlevel. These jets must be protected from pool surging where they might oscillate (jump). In circular pools, a surge wall terminating just below waterlevel must enclose the falling spray. To animate a number of 60 jets in a pool, the same can be designed to introduce rhythmic oscillation (Example: 4m\13' square pool x 1m\3' depth with 5 x 63 jets, one in center, the other 4 equidistant from center to corners. After the fountain operates for a few minutes, peripheral jet # 1 will jump, then # 3 then # 4 then #2 etc, while the center jet, that creates the surging oscillates the least. In circular pool the spray of a ring of 60 jets can be induced to oscillate in a continuous clockwise wave motion.

PEM #	60 505-6110	61 505-6120	62 505-6130	63 505-6140	64 505-6150	65 505-6160	66 505-6210	66A* 505-0620	66A** 505-6220
T	1/2"	3/4"	1"	1 1/4"	1 1/2"	2"	3"	3"	3"
OX	12mm 0.50"	20mm 0.75"	25mm 1.0"	32mm 1.25"	38mm 1.5"	51mm 2.0"	76mm 3.0"	76/88mm 3.0/3.5"	76/88mm 3.0/3.5"
SS	3.2mm 0.125"	4.8mm 0.187"	6.4mm 0.25"	8.3mm 0.325"	9.6mm 0.375"	12.7mm 0.50"	19mm 0.75"	19mm 0.75"	38mm 1.5"
OV	177mm 7.00"	241mm 9.50"	286mm 11.26"	355mm 14.0"	407mm 16.0"	457mm 18.0"	533mm 21.0"	533mm 21.0"	533mm 21.0"
OV1	83mm 3.25"	89mm 3.50"	108mm 4.25"	121mm 4.75"	134mm 5.25"	178mm 7.0"	254mm 10.0"	254mm(-adj.) 10.0"	318mm(+adj.) 12.5"
UT	134mm 5.25"	152mm 6.0"	184mm 7.25"	222mm 8.75"	260mm 10.25"	254mm 10.0"	330mm 13.0"	330/406mm 13/16.0"	330/406mm 13/16.0"
UT1	51mm 2.00"	64mm 2.50"	76mm 3.0"	101mm 4.0"	127mm 5.0"	76mm 3.0"	76mm 3.0"	89mm 3.5"	152mm 6.0"

PERFORMANCES :

V	FL		MC		FL		MC		FL		MC		FL		MC		FL		MC		*Sleeve up		**Sleeve down		
	m	L	m	L	m	L	m	L	m	L	m	L	m	L	m	L	m	L	m	L	m	L	m		
0.5	27	3.4	48	3.1	72	2.6	99	2.5	133	2.5	216	2.2													
1.0	36	5.8	61	4.8	88	4.6	125	4.5	171	4.9	262	3.9	360	3.1	405	4.0	455	5.2							
1.5	46	8.0	72	5.9	99	5.8	148	6.7	205	6.9	303	5.2	424	4.3	462	5.5	530	7.3							
2.0			84	8.3	114	7.0	171	8.0	231	8.4	337	6.3	470	5.5	504	7.7	621	10.4							
2.5			99	9.6	125	8.6	186	8.9	258	11.6	364	7.4	508	7.1	553	9.5	769	12.9							
3.0					133	11.0	194	10.7	281	17.1	383	8.2	534	8.3	644	11.0	837	15.0							
4.0							224	14.7	337	21.1	432	9.9	648	9.8	746	13.5	932	18.0							
5.0									379	23.5	473	11.6	769	11.9	844	16.5	981	21.1							
6.0											515	13.2	852	15.6	928	19.6	1068	26.6							
8.0													1091	24.7	996	22.6	1170	30.8							
10.0													1150	28.5	1280	32.0	1470	44.2							
12.0													1300	30.0	1500	35.0	1720	52.0							
15.0															2250	44.0	2140	60.0							
			Spray diameter (H) - Appr. 50% of Sprayheight																						
Ft	G	Ft	G	Ft	G	Ft	G	Ft	G	Ft	G	Ft	G	Ft	G	Ft	G	Ft	G	Ft	G	Ft	G	Ft	
1	6	7	11	7	17	7	23	8	32	8	51	5	67	5	80	7	88	8							
2	8	14	14	13	20	12	28	13	38	13	60	9	80	7	92	10	105	12							
3	9	19	16	15	22	15	32	16	44	16	67	12	91	9	104	13	117	17							
4	11	23	17	19	24	17	36	19	49	20	73	15	102	12	114	17	128	20							
5	12	26	19	23	26	19	39	22	54	23	80	17	112	14	122	19	140	24							
6			21	26	29	22	42	24	58	27	85	19	121	17	132	24	155	29							
8			25	30	32	26	48	29	66	37	93	23	132	21	149	28	195	40							
10					35	36	51	35	74	56	101	26	141	26	170	36	221	50							
15							62	56	95	73	120	35	198	35	210	49	249	63							
20									121	86	136	43	225	55	245	65	282	86							
30											163	61	290	74	306	88	359	129							
40													344	95	397	113	455	170							
50															595	144	566	197							