

PEM 08

DIRECTIONAL ADJUSTMENT FLANGES

#504-4000

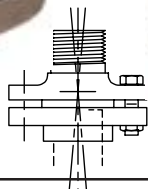


08-2



#	PEM	T"	O V		OD		Addition *	
			mm	Inches	mm	Inches	mm	Inches
504- 4010	08-1	1/2"	57	2.244"	84	3.310"	38	.50"
504- 4020	08-2	3/4"	57	2.244"	84	3.310"	38	1.50"
504- 4030	08-3	1"	62	2.450"	84	3.310"	40	1.57"
504- 4040	08-4	1 1/4"	65	2.560"	110	4.330"	45	1.77"
504- 4050	08-5	1 1/2"	70	2.760"	110	4.330"	48	1.90"
504- 4060	08-6	2"	80	3.150"	118	4.645"	48	1.90"
504- 4070	08-7	2 1/2"	80	3.150"	130	5.120"	48	1.90"
504- 4080	08-8	3"	90	3.544"	162	6.375"	51	2.01"
504- 4090	08-9	4"	96	3.780"	170	6.688"	45	1.77"
504- 4100	08-10	6"	104	4.090"	308	12.130"	38	1.50"

Max. Adjustment
Off Centerline: 5°



* = Approximate addition to height of riser pipe for the insertion of the adjustment flange. Dimensions shown replace catalog dimensions where applicable. 'Addition' dimensions are average, might vary depending on pipe threads.

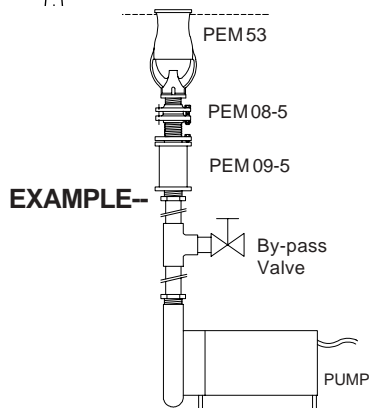
PEM 09

ELEVATION ADJUSTMENTS

#504-4200



09-4



PEM 09 Series Elevation Adjustments are made of bronze, brass and copper, stainless steel fitted. **PEM 09 Series Jet & Nozzle Adjustments** are designed primarily for use with waterlevel dependent cascade, geyser or foam jets to change or alter nozzle immersion AFTER INSTALLATION. By decreasing the nozzle immersion, the sprayheight increases and the spray effect gets lighter, by increasing the nozzle immersion the sprayheight decreases and the spray effects gets heavier. The use of this adjustment permits a better matching of the jet to available pump performances. Sprayheights of waterlevel dependent spray effects can be increased without changing the pump manifold. The adjustment range is appr. 50 mm/2.000", sufficient for most applications that might arise. The elevation adjustments are for use below waterlevel only.

A locking device assures permanence of adjustment. For ease of installation, the device must be in locked position prior to mounting of jet.

#	PEM	T"	mm	OV Inches
504- 421	09-1	1/2"	130	5.120"
504- 422	09-2	3/4"	130	5.120"
504- 4230	09-3	1"	130	5.120"
504- 4240	09-4	1 1/4"	150	5.910"
504- 4250	09-5	1 1/2"	150	5.910"
504- 4260	09-6	2"	200	7.870"
504- 4280	09-8	3"	200	7.870"

Maximum extension over 'OV' = 50mm/2.0",

Extension riser nipple has screw adjustment with positive lock.

Pipe connections, NPT or BSP, must be specified.

PEM 14

WATERLEVEL INDEPENDENT AERATING JETS

#504-5000



14-3



14-6



14-7

PEM 14 Series Jets are made of cast bronze and brass, stainless steel fitted. **PEM 14 Series Waterlevel Independent and Flow Adjustable Aerating Jets** are for installation above water level, the complete jet has to be above waterlevel. For installations into fountain pools use **PEM 14-10 Series immersible jets**, but waterlevel independent aerating jets and have an adjustable after installation flow control.

PEM #	14-3		14-6		14-7	
	504-5010		504-5030		504-5050	
T	1"		1 1/2"		2"	
OX	51mm \ 2.0"		51mm \ 2.0"		76mm \ 3.0"	
OV	166mm \ 6.5"		170mm \ 6.7"		248mm \ 9.8"	
OD	73mm \ 2.9"		73mm \ 2.9"		110mm \ 4.3"	
X (+/-)*	2mm \ 0.08"		3mm \ 0.12"		4mm \ 0.16"	
SS	1.7mm \ 0.065"		2mm \ 0.08"		3mm \ 0.125"	
V	FL	MC	FL	MC	FL	MC
m	L	m	L	m	L	m
0.50	76	2.5	87	2.75		
1.00	91	4.3	106	4.58		
1.50	106	5.9	129	6.10	269	3.4
2.00	118	7.1	144	7.62	311	4.0
2.50	163	8.1	163	9.15	347	5.1
3.00			182	10.70	383	6.1
4.00			238	13.70	440	7.7
5.00					485	9.8
6.00					526	12.2
Ft	G	Ft	G	Ft	G	Ft
2	22	10	24	10		
3	24	13	27	13		
4	26	17	31	17		
5	28	20	33	20	71	11
6	30	23	37	23	79	13
8	34	29	42	29	90	15
10		43	48	35	101	20
12			56	42	111	23
15			73	53	123	31
20					139	41

* - 'X' Output is adjustable after installation .

Performances shown are with shown 'X' opening.