

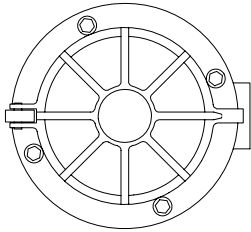
SUBMERSIBLE LIGHTFIXTURE **PEM E300**

Low Profile Lightfixtures with water cooled reflector
120V / 240V - Max. 500W , 12V / 100W , 24V / 150W

APPROVALS

CSA: 120 / 24 & 12V
excluding add on /-2.
CE: 12V excluding add on /-2.
CS: 240 / 24 & 12V
excluding add on /-2.
UL: 120 / 24 & 12V
excluding add on /-2.

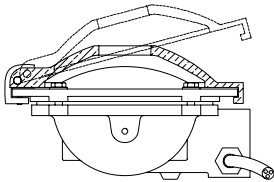
E300A + 10-6



E300A + 10-6 + B9

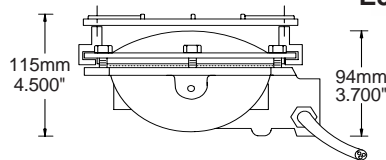


E300A + B7S + B1S



115mm
4.500"

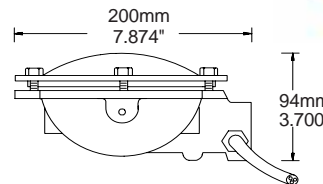
E300A + 10-2



115mm
4.500"

94mm
3.700"

E300A



200mm
7.874"



E300A + B9

LAMP, Quartz Halogen - OPTIONAL.

S & F , 120V / 240V, Max. 500W, Mini Candelabra, T4-MC / E11 base.
JC , 12V or 24V 6.35-1.0 base, Max. 100W / 12V & 150W / 24 V.
-36 , 12V - AR111 max. 100W or PAR36 Lamps.

CONSTRUCTION OF LIGHTFIXTURE:

FIXTURE HOUSING & Facing : Cast Bronze. Stainless Steel fitted.

'S' and 'F' type fixtures have water cooled & chromed parabolic integral reflector.

'S' Option has polished reflector with concentrated beam output: Spot Light.

'F' Option has diffused output with better color rendition: Flood Light.

-36 Option has machined fit for AR111 / PAR36 Lamps.

LAMP HOLDER:

T4-MC: 120V / 240V fixtures: Ceramic, mini-candelabra E11 screw base.

For JC fixtures: G 6.35-1.0, Bi Pin base.

-36, Fork terminals for screw connection of lamps and (2) holding clamps.

LENS: 143mm / 5.625" Diameter. See page 310.

STANDARD: Convex cast glass, heat resistant and tempered. Clear or 5 colors.

OPTIONAL:

FLAT CLEAR LENS.

FLAT DICHRO COLOR LENS - Choice of 10 colors.

RE-FIT ADAPTER 8-03 for FLAT & DICHRO LENS. For fixtures made before 10, 1999.

LENS GASKET:

Custom molded 'U' shape made of approved material for the application.

LENS SHADE -0-5 :

OPTIONAL: (Required for clean, dichro. color) illumination).

THERMAL CUT OFF:

Optional integral to protect cable entry. 120V & 240V single cable fixtures only.

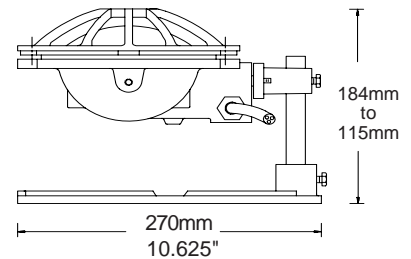
ELECTRICAL CABLE:

Approved for the purpose with integral epoxy encapsulated, compression type cable entry in factory assembled fixtures.

For low voltage cable see pages 308 & 309 for cable size & length

MOUNTING OPTIONS: Optional.

E300A+10-7+B9

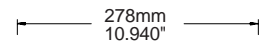


184mm
to
115mm

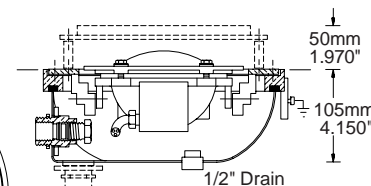
270mm
10.625"

E300A + B60-1-2

Low Profile Niche



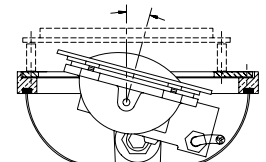
278mm
10.940"



50mm
1.970"

105mm
4.150"

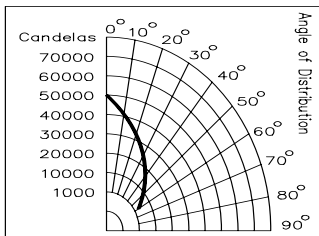
15° Tilt off centerline



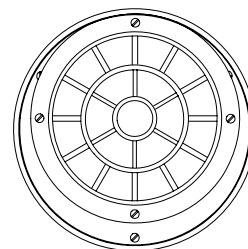
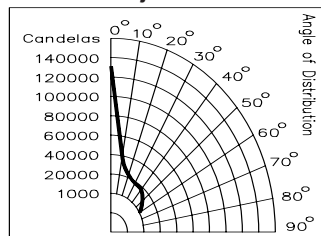
CANDLE POWER

measured in open air 2m / 6.56 feet from clear lens without rockguard.

E300A-F - 500W / 120V



E300A-S - SP Adjusted - 500W / 120V



PEM E 300

2006-10

	SERIAL	PEM	Web Site Index # 6 / Catalog. Pages 332 - 333	CABLE Length & Size	W. Kg
	315-0000	Cat.	FOR LAMPs AS INDICATED (Not included)		
E300A			FIXTURE, W. CONVEX LENS, NO STAND WITH CABLE		
	315-1111	E300A-S-1-11	UL/CSA-For T4, MC, E11, 120V, max. 500W with cable	9' x 16/3STWA/SOW	3.5
E300A+B6-1	315-1121	E300A-F-1-21	UL/CSA-For T4, MC, E11, 120V, max. 500W with cable	9' x 16/3STWA/SOW	3.7
	315-1131	E300A-S-1-31	For T4, MC, E11, 240V, max. 500W with cable	2.7m x 3 x 1.5mm2	3.5
E300A+B9+10-6	315-1132	E300A-S-1-32	For T4, MC, E11, 240V, max. 500W with cable	5.0m x 3 x 1.5mm2	4.5
	315-1133	E300A-S-1-33	For T4, MC, E11, 240V, max. 500W with cable	10.0m x 3 x 1.5mm2	5.5
E300A+B9+10-6 (open)	315-1141	E300A-F-1-41	For T4, MC, E11, 240V, max. 500W with cable	2.7m x 3 x 1.5mm2	3.7
	315-1142	E300A-F-1-42	For T4, MC, E11, 240V, max. 500W with cable	5.0m x 3 x 1.5mm2	4.7
E300A+B1S	315-1143	E300A-F-1-43	For T4, MC, E11, 240V, max. 500W with cable	10.0m x 3 x 1.5mm2	5.7
	315-1151	E300A-S-2-51	For JC, Bi Pin, max. 12v-100w / 24V-150W, with cable	2.7m x 2 x 2.5mm2	3.7
E300A+B30-1	315-1152	E300A-S-2-52	For JC, Bi Pin, max. 12v-100w / 24V-150W, with cable	5.0m x 2 x 4mm2	4.4
	315-1153	E300A-S-2-53	For JC, Bi Pin, max. 12v-100w / 24V-150W, with cable	10.0m x 2 x 6mm2	6.3
E300A+B56-1	315-1161	E300A-F-2-61	For JC, Bi Pin, max. 12v-100w / 24V-150W, with cable	2.7m x 2 x 2.5mm2	3.7
	315-1162	E300A-F-2-62	For JC, Bi Pin, max. 12v-100w / 24V-150W, with cable	5.0m x 2 x 4mm2	4.4
	315-1163	E300A-F-2-63	For JC, Bi Pin, max. 12v-100w / 24V-150W, with cable	10.0m x 2 x 6mm2	6.3
	315-1171	E300A-3-71	For AR111- max. 12v, 100W, with cable	2.7m x 2 x 2.5mm2	2.9
	315-1172	E300A-3-72	For AR111- max. 12v, 100W, with cable	5.0m x 2 x 4mm2	3,1
	315-1173	E300A-3-73	For AR111- max. 12v, 100W, with cable	10.0m x 2 x 6mm2	3.4
			ADD ON TO STANDARD FIXTURES		
	391-2001	+/-30-2	#2A, 143mm Clear Flat Lens	Cat.Pag. 310/Web INDEX 6	0.3
	391-2000	+/-35-2-0000	#2, 143mm Flat Dichro Color Lens.	Cat.Pag. 310/Web INDEX 6	0.3
	332-3043	+/-0902	Flat Lens Adapter (Required for Flat Lenses)		0.9
	391-0722	+/-05	Dichro Lens Shade	Clip On	0.9
	350-0003	+/-07	Thermal Cut Off for 120V / 240V only	Factory wired only	0.1
	350-0014	+/-10-2	Clip On Rockguard		0.8
	350-0026	+/-10-6	Swing Up Rockguard		0.9
	350-0029	+/-10-7	Lensguard (In Addition To Lightfixture Only)		0.7
	350-0109	+/-B1	Tripod Stand, 40cm WD		1.4
	350-0110	+/-B1S	Tripod Stand, 25cm WD		1.2
	350-0130	+/-B4	Ring Stand, 60cm WD		2.4
	350-0220	+/-B6-1	Mounting Brackets		1.1
	350-0290	+/-B7	Mounting Yoke		0.8
	350-0410	+/-B9	250mm Ring Stand , 184mm height		1.3
	350-0320	+/-B30-0	B 30 Niche, Side Conduit, Brass fitted	Requires extra cable length	3.7
	350-0321	+/-B30-1	B 30 Niche, Side Conduit, St.St. fitted	Requires extra cable length	3.7
	350-0324	+/-B30-4	B 30 Niche, Bottom Conduit, Brass fitted	Requires extra cable length	3.7
	350-0325	+/-B30-5	B 30 Niche, Bottom Conduit, St.St. fitted	Requires extra cable length	3.7
	350-0330	+/-B60-1	B60 Composite Niche	Requires extra cable length	4.5
	350-4041	+/-B60-2	Bolt On Niche B 60 Rockguard		1.5
	350-4042	+/-58-05	Tile Mask for B30 & B60 Niche		2.8
	350-2310	+/-B56-1	Slab Hanger		3.1
	350-2320	+/-B56-1A	Slab Hanger with Locks		3.5
	350-2410	+/-B57-1	Waterfall Slab Hanger		2.8
	350-2420	+/-B57-1A	Waterfall Slab Hanger with Locks		3.2
	350-0733	+/-B23-6	Bracket for 6 Lights on 3" Pipe		1.0
	350-0734	+/-B23-7	Bracket for 6 Lights on 4" Pipe		1.6
	350-0742	+/-B23-2-1	16mm x 100mm Mounting Rod For B23		0.3
	350-0742	T301	Transformer 240V, 50Hz x 12V/24V, 300VA	IP23,While Stocks last	2.2